



BI-50-Xtra Slim Electric Fireplace

# PANORAMA SERIES

ELECTRIC FIREPLACES  
INDOOR • OUTDOOR

*Amantii*



# EXTRA SLIM

### INCREDIBLY THIN AT JUST 4"

Our Panorama series family just got better with the addition of the Extra Slim! With an opening height of 11-7/8" and available in four sizes, you'll find a unit that is perfect for any space in your home, business or commercial space. At just 4" in depth, the XS is perfectly suited to installations where wall depth is at a premium.

Boasting our FIRE & ICE® Flame presentation with three color LED light strips allowing for multi-color flame options. With just a click of the included remote control, choose from blue, rose, violet, yellow or orange colored flames. The Extra Slim model comes standard with clear decorative media with additional media options available for purchase.

### KEY FEATURES

-  Heater & Fan
-  Hard-wire ready. Thermostat hard-wire ready
-  Rated for indoor & outdoor use including bathrooms
-  Very thin – only 4" in depth
-  Perfect for zone heating. Approx. 500 sq. ft. 5000 BTUs
-  FIRE & ICE® Flame presentation. Three light strips allow for yellow, orange, blue, violet & rose colored flames

### INCLUDED ACCESSORIES

The Panorama Extra Slim series come with clear decorative media, plus a remote.  
*\*Remote control may not be exactly as shown*



### IDEAL APPLICATIONS

- Residential spaces
- Patios
- Outdoor spaces
- Commercial spaces
- Restaurants
- New construction or renovations

### TECHNICAL SPECS

Volts	120
Amps	12.5
Watts	1500 max
Heater On	1500 watts high, 750 watts low
Heater Off	22 watts
Rotor Motor	1 at 5 watts
BTU	5000

### OPTIONAL LOG SET



### BI-50-XTRASLIM

\*Height, Width, Depth: 19 7/8 x 49 1/8 x 4  
Glass Viewing Area: 11 7/8 x 45 1/4  
Surround Size: 15 7/8 x 49 1/8  
\*\*Shipping Size: 23 x 55 3/5 x 7 2/7  
Shipping Weight: 67 lbs. Glass Included



### BI-60-XTRASLIM

\*Height, Width, Depth: 19 7/8 x 59 1/8 x 4  
Glass Viewing Area: 11 7/8 x 55 1/4  
Surround Size: 15 7/8 x 59 1/8  
\*\*Shipping Size: 23 x 65 3/5 x 7 2/7  
Shipping Weight: 77 lbs. Glass Included



### BI-30-XTRASLIM



\*Height, Width, Depth: 19 7/8 x 29 1/8 x 4  
Glass Viewing Area: 11 7/8 x 25 1/4  
Surround Size: 15 7/8 x 29 1/8  
\*\*Shipping Size: 23 x 35 3/5 x 7 2/7  
Shipping Weight: 51 lbs. Glass Included

### BI-40-XTRASLIM

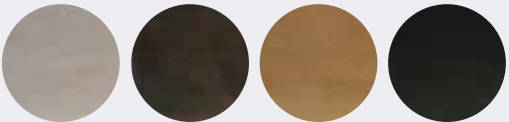


\*Height, Width, Depth: 19 7/8 x 39 1/8 x 4  
Glass Viewing Area: 11 7/8 x 35 1/4  
Surround Size: 15 7/8 x 39 1/8  
\*\*Shipping Size: 23 x 45 3/5 x 7 2/7  
Shipping Weight: 56 lbs. Glass Included

### BI-40-XTRASLIM MANTEL-SURROUND



White Birch • Grey Bark • Natural Birch • Knotty Black



### Beautifully Inspired

Amantii's newest line of birch wood mantel-surrounds bring the beauty of genuine birch wood into any space. With four nature inspired colors to choose from, you will find a mantel-surround that is perfect for any space in your home, business or commercial setting. Amantii has designed a mantel-surround for your Bi-40-XTRASLIM fireplace that will compliment every style.

All our mantel-surrounds have been crafted from birch wood with a paint wash application reflective of the variety of colors found in a birch tree forest.

As with all genuine products, variations to the natural wood grain will mean there could be slight variations that may differ from the catalog images or samples.

Variations will occur in color, character, tone and grain from product to product. Slight variations between samples and finished goods should be anticipated. In addition, a touch up pen has been included in the packaging should there be any imperfections caused by the shipping of this product.

The BI-40-XTRASLIM mantel-surrounds have been approved for use in kitchens and bathrooms. The mantel-surrounds cannot be used in outdoor settings.



SLIM

REACHING NEW HEIGHTS

The Panorama Slim Series of built-in electric fireplaces have been designed to give you the maximum in flexibility in selecting a unit that perfectly suits your needs. The stylish electric fireplace will be a focal point in any room, indoor or outdoor.

At just 6 3/4" in depth, the Slim is a practical choice for new construction projects and renovations alike. As well as giving you the ability to install your fireplace with your choice of finishing material built

right to the glass for a "clean face" design or using the provided black metal surround. Your choice – your design!

Featuring the vibrant Fire & Ice® flame set, with just a click of your remote you can easily change the flame color from blue to purple to violet to orange or yellow. Additional media options available for purchase.

KEY FEATURES

- 

Heater & Fan  
Flame operates with or without heat
- 

Hard-wire ready.  
Thermostat hard-wire ready
- 

Illuminate decorative media like never before with ambient canopy lighting in 13 colors
- 

Slim 6 3/4" comes with large glass chunks, clear & blue diamond fire glass media, black steel surround that can be installed if preferred
- 

Perfect for zone heating. Approx. 500 sq. ft. 5000 BTUs
- 

FIRE & ICE® Flame presentation.  
Three light strips allow for yellow, orange, blue, violet & rose colored flames

IDEAL APPLICATIONS

- Residential spaces
- Patios
- Outdoor spaces
- Commercial spaces
- Restaurants
- New construction or renovations

TECHNICAL SPECS

Volts	120
Amps	12.5
Watts	1500 max
Heater On	1500 watts high, 750 watts low
Heater Off	22 watts
Rotor Motor	1 at 5 watts
BTU	5000

BI-72-SLIM-OD

\*Height, Width, Depth: 23 5/8 x 72 1/8 x 6 3/4  
Glass Viewing: 11 7/8 x 68 3/4  
Surround Size: 15 5/8 x 72 1/8  
\*\*Shipping Size: 25 1/3 x 82 1/3 x 9  
Shipping Weight: 137 lbs. Glass Included



BI-60-SLIM-OD

\*Height, Width, Depth: 23 5/8 x 58 5/8 x 6 3/4  
Glass Viewing: 11 7/8 x 55 1/4  
Surround Size: 15 5/8 x 59 5/8  
Shipping Size: 25 1/3 x 64 5/7 x 9  
Shipping Weight: 107 lbs. Glass Included

BI-40-SLIM-OD



\*Height, Width, Depth: 23 5/8 x 38 5/8 x 6 3/4  
Glass Viewing Area: 12 x 34 1/4  
Surround Size: 15 3/4 x 38 5/8  
\*\*Shipping Size: 44 7/8 x 9 x 25 1/3  
Shipping Weight: 72 lbs. Glass Included

BI-50-SLIM-OD



\*Height, Width, Depth: 23 5/8 x 49 5/8 x 6 3/4  
Glass Viewing: 11 5/8 x 45 1/4  
Surround Size: 15 5/8 x 48 5/8  
\*\*Shipping Size: 25 1/3 x 55 x 9  
Shipping Weight: 92 lbs. Glass Included

BI-88-SLIM-OD



\*Height, Width, Depth: 23 5/8 x 88 5/8 x 6 3/4  
Glass Viewing: 11 5/8 x 84 3/4  
Surround Size: 15 5/8 x 88 1/8  
\*\*Shipping Size: 25 1/3 x 98 2/5 x 9  
Shipping Weight: 160 lbs. Glass Included

INCLUDED ACCESSORIES

The Panorama Slim series come with clear decorative media and our ICE media kit including large glass chunks, clear and blue diamond media and optional black steel surround, plus a remote.



\*Remote control may not be exactly as shown



DEEP

REACHING NEW HEIGHTS


The Panorama Deep Series of built-in electric fireplaces have been designed to give you the maximum in flexibility in selecting a unit that perfectly suits your needs. The stylish electric fireplace will be a focal point in any room, indoor or outdoor.


The Deep Series gives you a 12” depth and multiple length options, as well as giving you the


ability to install your fireplace with your choice of finishing material built right to the glass for a “clean face” design or using the provided black metal surround. Your choice – your design!


Featuring the vibrant Fire & Ice® flame set, with just a click of your remote you can easily change the flame color from blue to purple to violet to orange or yellow.


KEY FEATURES


 Heater & Fan  
Flame operates with or without heat

 Hard-wire ready.  
Thermostat hard-wire ready

 Illuminate decorative media like never before with ambient canopy lighting in 13 colors

 Deep 12” comes with large glass chunks, clear & blue diamond fire glass media, an 11 piece log set, and black steel surround that can be installed if preferred

 Perfect for zone heating. Approx. 500 sq. ft. 5000 BTUs

 FIRE & ICE® Flame presentation.  
Three light strips allow for yellow, orange, blue, violet & rose colored flames

IDEAL APPLICATIONS

- Residential spaces
- Patios
- Outdoor spaces
- Commercial spaces
- Restaurants
- New construction or renovations

TECHNICAL SPECS

Volts	120
Amps	12.5
Watts	1500 max
Heater On	1500 watts high, 750 watts low
Rotor Motor	2 at 5 watts
BTU	5000



BI-72-DEEP-OD

\*Height, Width, Depth: 23 5/8 x 72 1/8 x 12  
Glass Viewing - 11 7/8 x 68 3/4  
Surround Size - 15 5/8 x 72 1/8  
\*\*Shipping Size - 25 1/3 x 82 1/3 x 14 1/6  
Shipping Weight: 157 lbs. Glass Included



BI-88-DEEP-OD

\*Height, Width, Depth: 23 5/8 x 88 1/8 x 12  
Glass Viewing Area: 12 x 84 3/4  
Surround Size: 15 3/4 x 88 1/8  
\*\*Shipping Size: 98 2/5 x 14 1/6 x 25 1/3  
Shipping Weight: 197 lbs. Glass Included

BI-40-DEEP-OD



\*Height, Width, Depth: 23 5/8 x 38 5/8 x 12  
Glass Viewing Area: 12 x 34 1/4  
Surround Size: 15 3/4 x 38-5/8  
\*\*Shipping Size: 44 7/8 x 14 1/6 x 25 1/3  
Shipping Weight: 93 lbs. Glass Included

BI-50-DEEP-OD



\*Height, Width, Depth: 23 5/8 x 48 1/2 x 12  
Glass Viewing Area: 12 x 45 1/4  
Surround Size: 15 3/4 x 49 1/4  
\*\*Shipping Size: 55 x 14 1/6 x 25 1/3  
Shipping Weight: 111 lbs. Glass Included

BI-60-DEEP-OD



\*Height, Width, Depth: 23 5/8 x 58 5/8 x 12  
Glass Viewing Area: 12 x 55 1/4  
Surround Size: 15 3/4 x 59 1/8  
Shipping Size: 64 5/7 x 14 1/6 x 25 1/3  
Shipping Weight: 128 lbs. Glass Included

INCLUDED ACCESSORIES

The Panorama DEEP series come with an 11 piece log set and our ICE media kit including large glass chunks, clear and blue diamond media and optional black steel surround, plus a remote.



\*Remote control may not be exactly as shown



# EXTRA TALL

### REACHING NEW HEIGHTS

Featuring an Extra Tall viewing area that is 18” in height! That is 6” taller than our other Panorama models. It has a deep media tray and comes standard with your choice of an incredible log set, ICE media, pebbles, stones, black glass and vermiculite embers allowing consumers to completely customize the look of their fireplace.

Built with Amantii’s FIRE & ICE® Flame presentation made of three color LED light strips allowing for multi-color flame options. With just a click of the included remote control, choose from blue, rose, violet, yellow or orange colored flames. Additional media options available for purchase.

### IDEAL APPLICATIONS

- Residential spaces
- Patios
- Outdoor spaces
- Commercial spaces
- Restaurants
- New construction or renovations

### KEY FEATURES

- 

Heater & Fan
- 

Hard-wire ready.  
Thermostat hard-wire ready
- 

Rated for indoor & outdoor use including bathrooms
- 

Glass viewing area is 18” in height
- 

Perfect for zone heating. Approx. 500 sq. ft. 5000 BTUs
- 

FIRE & ICE® Flame presentation.  
Three light strips allow for yellow, orange, blue, violet & rose colored flames

### TECHNICAL SPECS

Volts	120
Amps	12.5
Watts	1500 max
Heater On	1500 watts high, 750 watts low
Heater Off	22 watts
Rotor Motor	2 at 5 watts
BTU	5000

### BI-72-DEEP-XT

\*Height, Width, Depth: 29 1/2 x 72 1/8 x 12 5/8  
Glass Viewing Area: 17 3/4 x 68 3/4  
Surround Size: 21 3/4 x 72 5/8  
\*\*Shipping Size: 67 3/5 x 14 1/2 x 31 1/9  
Shipping Weight: 202 lbs. Glass Included

### BI-88-DEEP-XT

\*Height, Width, Depth: 29 1/2 x 88 5/8 x 12 5/8  
Glass Viewing Area: 17 3/4 x 84 3/4  
Surround Size: 21 3/4 x 88 5/8  
\*\*Shipping Size: 97 1/8 x 14 1/2 x 31 1/9  
Shipping Weight: 242.50 lbs. Glass Included

### BI-40-DEEP-XT



\*Height, Width, Depth: 29 1/2 x 38 5/8 x 12 5/8  
Glass Viewing Area: 17 3/4 x 34 1/4  
Surround Size: 21 3/4 x 39 1/8  
\*\*Shipping Size: 47 3/5 x 14 1/2 x 31 1/9  
Shipping Weight: 117 lbs. Glass Included

### BI-50-DEEP-XT



\*Height, Width, Depth: 29 1/2 x 48 5/8 x 12 5/8  
Glass Viewing Area: 17 3/4 x 45 1/4  
Surround Size: 21 3/4 x 49 1/8  
\*\*Shipping Size: 57 3/5 x 14 1/2 x 31 1/9  
Shipping Weight: 146 lbs. Glass Included

### BI-60-DEEP-XT

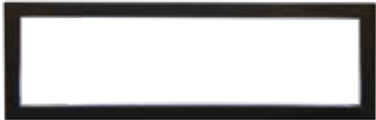


\*Height, Width, Depth: 29 1/2 x 58 5/8 x 12 5/8  
Glass Viewing Area: 17 3/4 x 55 1/4  
Surround Size: 21 3/4 x 59 1/8  
\*\*Shipping Size: 67 3/5 x 14 1/2 x 31 1/9  
Shipping Weight: 164 lbs. Glass Included

### INCLUDED ACCESSORIES

The Panorama Extra Tall series comes with your choice of one Design Media Kit, the ICE media set, plus a remote.

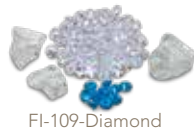
\*Remote control may not be exactly as shown



DESIGN-MEDIA-DRIFT-15PCE  
Includes an additional 4 mini logs (Not Shown)



ICE MEDIA



FI-109-Diamond

DESIGN-MEDIA-RUSTIC-14PCE



DESIGN-MEDIA-BIRCH-15PCE



AND CHOICE OF ONE MEDIA KIT:



PANORAMA SERIES | ELECTRIC FIREPLACES

FIRE GLASS

Our decorative fire glass media is a beautiful addition to your fireplace. Turn your fireplace into a expressive work of art by simply adding our decorative fire glass media. Our fire glass adds a distinctly modern feel to your gas fireplace - mix colors and textures for a unique appearance.

Our decorative fire glass is tempered and will not melt or degrade, some discoloration is normal on glass that is placed directly on the flame. Always wear protective gloves when handling fire glass media.

One 5lb container of media will cover 1 square foot.

AMSF-GLASS-01	AMSF-GLASS-02	AMSF-GLASS-03	AMSF-GLASS-04	AMSF-GLASS-05	
AMSF-GLASS-06	AMSF-GLASS-07	AMSF-GLASS-08	AMSF-GLASS-09	AMSF-GLASS-10	
AMSF-GLASS-11	AMSF-GLASS-12	AMSF-GLASS-13	AMSF-GLASS-14	FI-105-DIAMOND	FI-106-DIAMOND
FI-107-DIAMOND	FI-109 DIAMOND	LOG SET	LRG LOG SET	CLEAR	

Images are not to scale, please visit your local dealer to view the actual accessories.

Variations in the color and shade are inherent in all printing processes, the actual colors may vary slightly from those shown.

Note: Log sets and Designer Media Kits will fit in all sizes of the following models - Panorama DEEP, TRU VIEW XL and CUBE ONLY. (Depending on the size of the fireplace model, some logs may not be needed.)

DESIGNER MEDIA KITS

Add incredible value with designer media kits including deluxe log sets, glass and stone media and decorative embers.

DESIGN-MEDIA-BIRCH-10PCE	DESIGN-MEDIA-OAK-10PCE	DESIGN-MEDIA-NATURAL-8PCE
DESIGN-MEDIA-14PCE	DESIGN-MEDIA-BIRCH-15PCE	DESIGN-MEDIA-15PCE
14-piece log	15-piece Birch log	15-piece Drift log
Black fire glass 90-piece pebble Rocks	Black fire glass 90-piece pebble Rocks	Black fire glass Embers 1 Embers 3
Embers 1 Embers 2 Embers 3 Embers 4	Embers 1 Embers 2 Embers 3 Embers 4	90-piece pebble Rocks Embers 2 & 4
DESIGN-MEDIA-6PCE	DESIGN-MEDIA-SPLIT-LOG-16PCE	
6-piece log	16-piece log	
Black fire glass 90-piece pebble Rocks	Black fire glass 90-piece pebble Rocks	
Embers 1 Embers 2 Embers 3 Embers 4	Embers 1 Embers 2 Embers 3 Embers 4	



AM-PANORAMA-US

May 2022

Distributed By:

Product updates, specifications and dimensions are subject to change. Please refer to the product manual to verify measurements and clearance requirements. All local building codes must be followed.

*Amantii*

Visit our online showrooms at:

[www.amantii.com](http://www.amantii.com)

877-850-9458